

Copenhagen Solution Lab

Smart Cities Marketplace webinar,
February 13th, 2025





Copenhagen Solutions Lab

Copenhagen Solutions Lab is the City of Copenhagen's experts in innovation projects within the Smart City area.

Our starting point is the municipality's problems and innovation needs, and we facilitate and lead processors that identify relevant solutions developed by external partners.

Through the processes, the understanding and use of smart city technologies matures in the municipality for the benefit of the city's citizens and the green transition.



Problem / Needs Analysis



Solution Identification



Innovation Process





About us

Copenhagen Solutions Lab is part of the Technical and Environmental Management Department of the Municipality of Copenhagen, acting as internal consultants who can lead and facilitate innovation projects within the Smart City area.

We work to test, trial and implement smart city technologies from companies and knowledge institutions to mature and develop their relevance for the municipality.

We are thus the spearhead for innovation projects in Copenhagen, for the benefit of the city's citizens and companies, and are recognized for this by internal and external partners in the Nordic region.



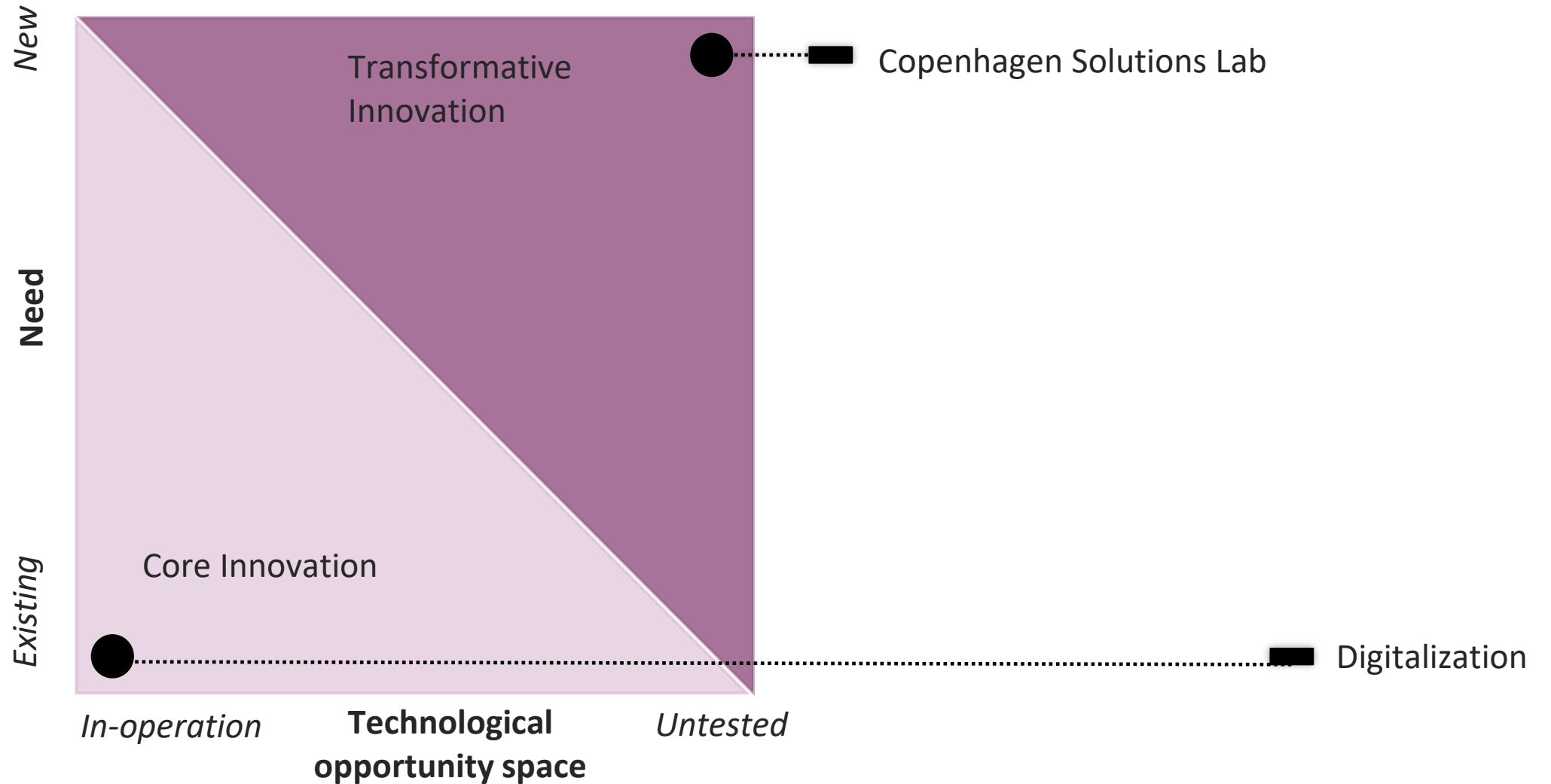
Standard innovation process

- Scoping of innovation needs
- Investigation of innovation solutions
- Innovation solution development process
- Evaluation and implementation of knowledge





Innovation levels





Transformative innovation

In order for the City of Copenhagen to achieve its future goals, there is a need to work with the technological trends and projections that are maturing within the smart city area.

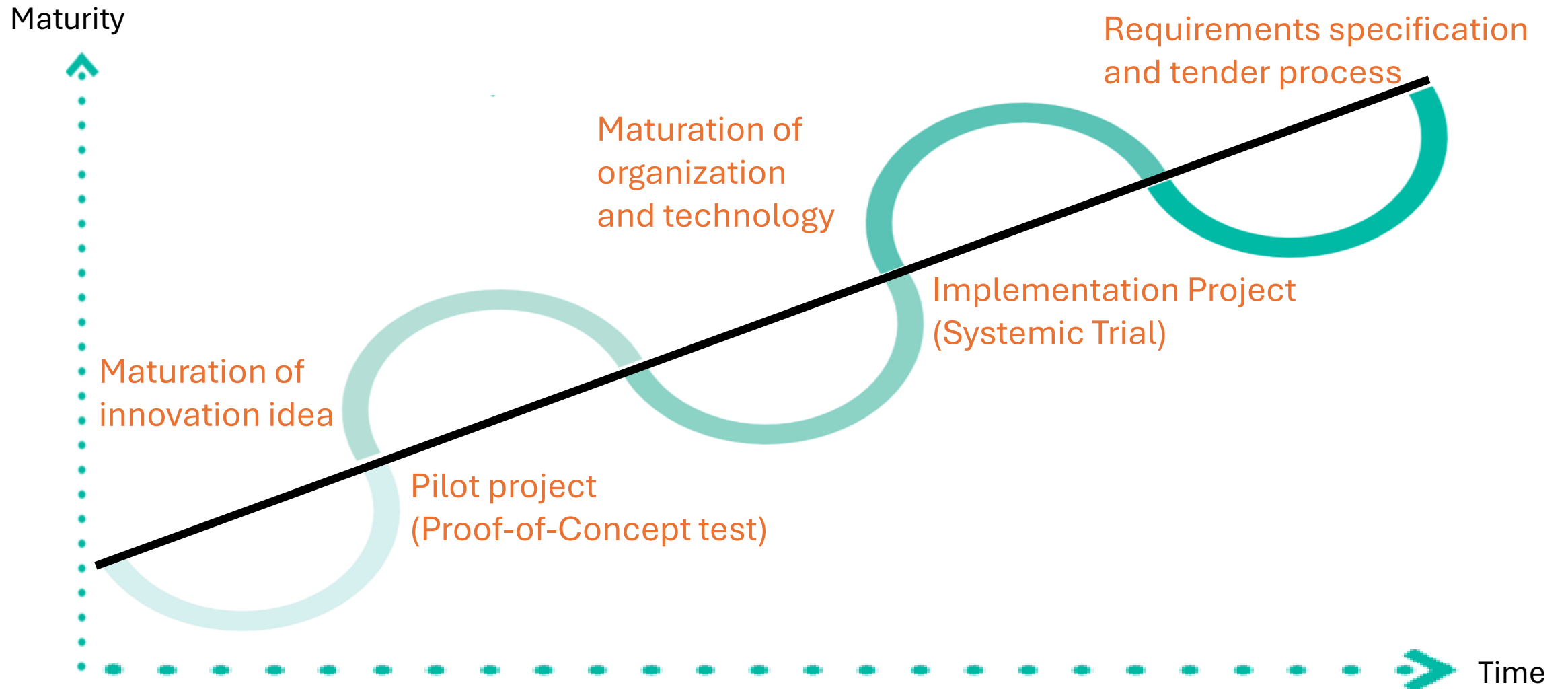
Focusing on the municipality's vision of green transition, we identify issues and needs through our expertise in project management and facilitation of innovation processes, thereby uncovering solutions that do not exist today.

Since transformative innovation often has a strategic purpose, with a major impact on workflows and finances, it requires the involvement of both internal and external partners.

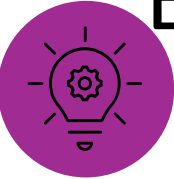




Transformative innovation process



Example: flexible energy



2019

Pilot test: the technology works for flex-heating and flex-electricity



2019-2021

Maturation of technology and organization as well as planning of implementation projects



2021

Signing of agreement on external funds for implementation testing and entering into agreements with suppliers



2024

Follow-up evaluation of the technologies' business cases and formulation of tender materials for procurement



2023

Evaluation of the technologies' business cases and knowledge sharing internally within the municipality and with the outside world



2021-2023

Systemic testing of flex-heat and flex-electricity in relation to digital integration, legal issues, changed workflows, etc. in collaboration with value chain partners for end-to-end energy optimization



2025-

Dissemination of solutions to private building owners and companies as well as further development of technology



Interdisciplinary working community

To act proactively in the work with innovation, we have built an interdisciplinary working community with professional units and business support functions in the municipality.

The interdisciplinary working communities make it possible to improve and systematize the municipality's internal organizational cooperation between professional units with their needs and the business support functions (Digitalization, Legal and Procurement) with their knowledge of future implementation.

The coordination of the municipality's internal resources creates a necessary knowledge base that makes it possible to improve and systematize the connection between the municipality's challenges and the solutions found in our Innovation Network.





Innovation network

Solution Partners

- Tech companies that develop and offer products to municipalities (hardware and software products).

Ecosystem Partners

- Organizations that contribute to the development of tech products (e.g. knowledge institutions, BLOXHUB, etc.).

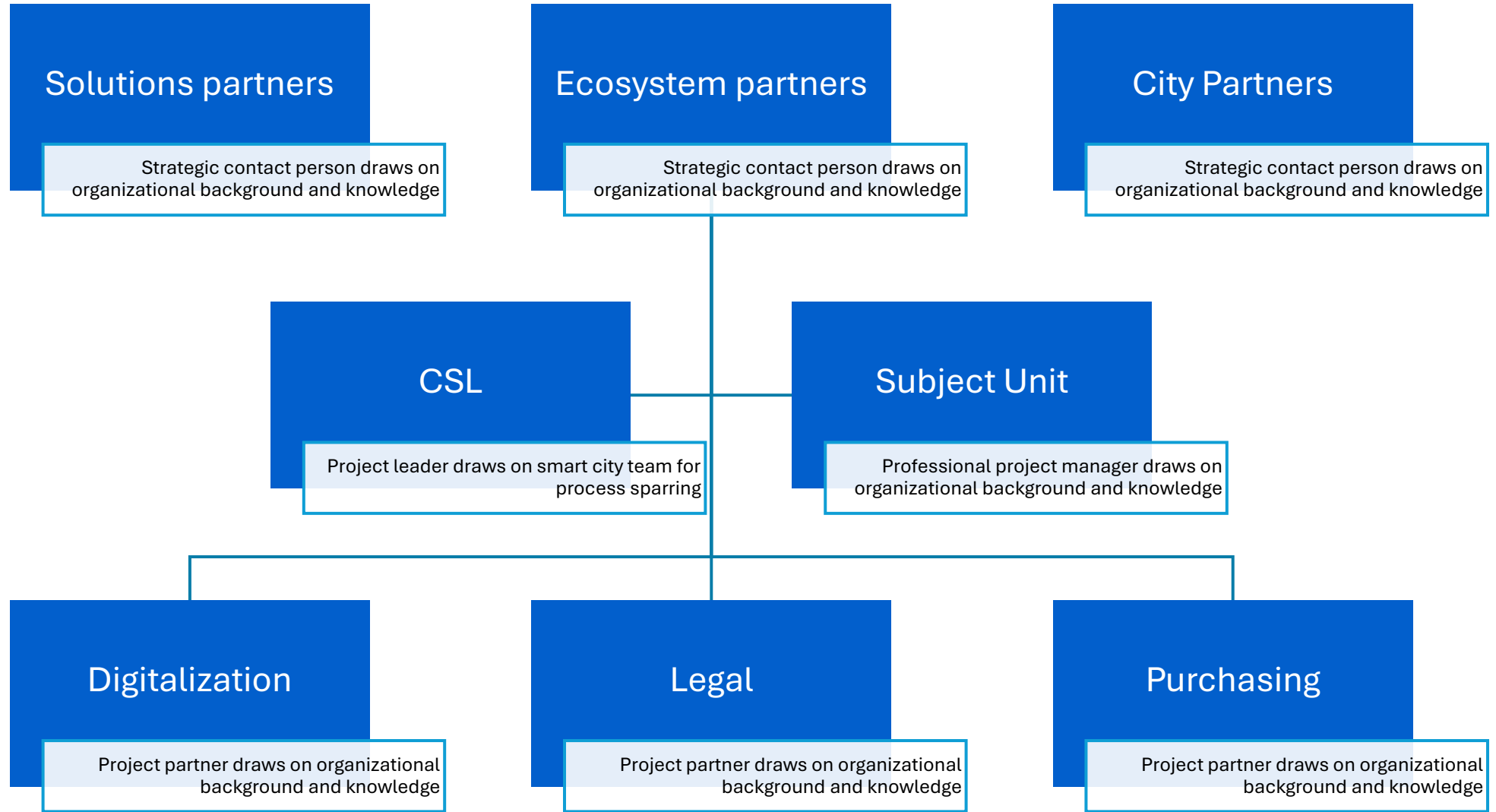
City Partners

- Cities where Copenhagen has relationships and shares information about innovation needs and solutions, etc.





Organisering af innovation





Focus areas

CSL's strategic goal is to support specific innovation needs in the City of Copenhagen's strategies and action plans, with a primary focus on the Climate Strategy 2035, through project management and facilitation of innovation processes.

In this context, we have identified a number of focus areas that both support the Climate Strategy's areas of action and at the same time also cover the innovation needs in the other cross-cutting strategies in the Technical and Environmental Administration, and thus have organizational and strategic focus for the City of Copenhagen.

The following shows the primary focus areas in heading form:

- Energy
- Mobility
- Resources and Waste



Thank you

