



Affordable Housing Initiative

5 June 2023

Citizen Engagement - Accelerate the Clean Energy Transition

EUSED

Martin Willemart, DG GROW-G2

General & policy context in 2020

34 Million people in **energy poverty** (+/- 80 M now)

Post **COVID-19** pandemic + **Housing crisis**

800,000 social homes to be renovated annually +
€57 billion investment gap in social and affordable
housing **per year**

Buildings responsible for **40 %** of EU's **energy consumption** and **36%** of its **greenhouse gas emissions**

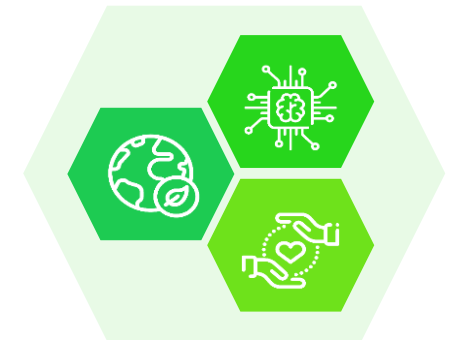
Renovation Wave

- Initiated by the **EU Green Deal** (2019) – along the Recovery plan for Europe (**NGEU**)
- **35 million buildings** could be **renovated** (X2 renovation rate) and up to **160 000** additional **green jobs** created in the construction sector by 2030
- **Affordable Housing Initiative** (AHI) to pilot **100 lighthouse** renovation (and construction) **districts** by **2030**
 - Key features: 1) Social and affordable housing + 2) district level + 3) integrated approach 4) replication
 - New European Bauhaus flagship (3 pillars: sustainability, aesthetics, inclusion)

Implementation I- EU-level cross-sectoral partnership (SMP)

European Affordable Housing Consortium

- Set-up EU partnership to act as renovation and construction projects **catalyser**
- In practice:
 - **20 lighthouse districts** supported with mentorship scheme
 - **3 blueprint modules:** project implementation, technical issues, **social innovation** (e.g. split incentives, occupants' engagement and co-creation, co-ownership models for dwellings, utilities, and energy communities, role of mediators and OSSs)
 - Handbook of **good practices** (e.g. community ownership, tenants' engagement)
 - Handbook of **project funding**
 - Trainings and events
- **Following-up call** - 'AHI European Partnership' to open Q1 2024



Local industrial partnerships (LIPs)

Construction sector and SMEs; Social and affordable housing sector; Local and regional public authorities, Financial institutions and investors, **Residents** and other **local stakeholders**

Implementation II- Innovation and experimentation (Horizon)

Social and affordable housing district demonstrators

- Testing and implementing **new methodologies** – replication + extra-mile in innovation
 - **drOp**: Social housing districts into inclusive smart neighborhoods
 - Physical, social and digital connectivity + growth creation potential of CCIs
 - 1 lighthouse district (demo case) and 2 peer cities (contribute + replicate)
 - **ProLight**: Focus on 1) energy communities and 2) energy and resource efficiency renovation
 - Awareness creation, behavioral changes + active and responsible citizenship
 - 2 innovation clusters with 2 lighthouse districts mentored by 1 pocket district
 - **SUPERSHINE**: Offer full renovation package with guaranteed energy savings
 - Information and incentives to public & private owners and tenants + alternative financial solutions (e.g. crowdfunding, PPPs, green public procurement)
 - 3 lighthouse districts (with detailed analysis and renovation plan) and 4 fellow districts
- Following-up call closed on 20 April 2023



Implementation III- Support social innovation (EUSIC)

Objectives

- To support social innovators to develop their ideas into working solutions shaping our society – **Social innovation** as key approach for responding to societal challenges
- Engage people, businesses, start-ups and other stakeholders (e.g. universities, engineering schools, incubators and civil society organisations) in a **large range of sectors**

Editions

- **2022** edition: ‘the **future of living, innovation for affordable, and sustainable housing districts**’
 - ❖ Sostre Civic as award winner: alternative cooperative housing model
- **2023** edition: “**Fighting energy poverty**” (closed on 30 May 2023)
 - ❖ Aspects related to monitoring, awareness raising, **specific target groups**, pricing models, production, consumption and energy savings, renovations, **energy communities** and joint investments

